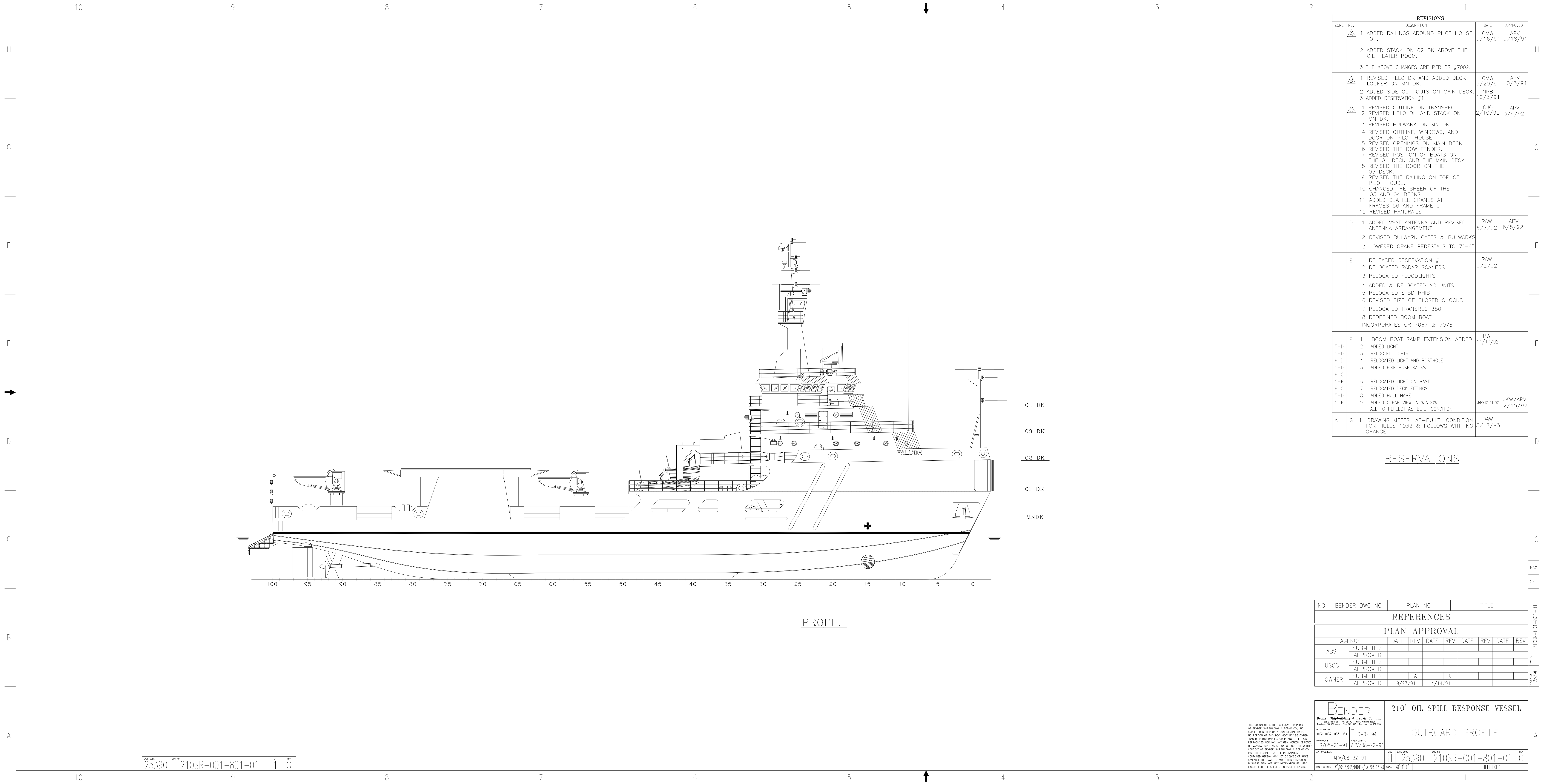


REVISIONS		DATE	APPROVED
ZONE	DESCRIPTION		
9-A	1 CHANGED STBD E/R ACCESS TO INCLINED LADDER. INCREASED SIZE OF HYD OIL TK.	9/16/91	CMW
6-B	2 ADDED WT ACCESS TO BT COMPT FR 21.	9/16/91	APV
10-E	3 CHANGED STERN RAMP TO BUILT IN.		
9-D	4 CHANGED CONFIGURATION AND LOCATION OF LADDER UP TO HELO-DK. MADE PROVISION FOR CONTROL CONSOLE ON LANDING.		
7-D	5 CHANGED OIL HEATER ROOM TO DECK LKR. DELETED ASSOCIATED COFFERDAM UNDER.		
7-E	6 CHANGED WORKSHOP CONFIGURATION.		
6-D	7 ADDED WATER CLOSET AND TWO SINKS TO MEN'S LOCKER ROOM. ADDED HEAD WITH ONE WATER CLOSET AND ONE SINK TO MESS AREA. ADDED ICE MAKER AND NIGHT REFRIGERATOR TO MESS AREA.		
6-E	8 CHANGED DOOR TO BT COMPT TO W.T.D. CHANGED HATCH TO 30" OPENING.		
7-E	9 MOVED PORT AFT BHD TO 6" FWD OF R.O. TANKS.		
9-F	10 CHANGED CONFIGURATION OF LADDER TO HELO-DK. INCREASED SIZE OF SAFETY ZONE MARKINGS.		
9-H	11 ADDED V.L. FOR ALTERNATE ACCESS TO HELO-DK.		
7-G	12 CHANGED CONFIGURATION OF OIL HEATER ROOM. MOVED PORT AFT BHD FWD TO LINE UP WITH STBD SIDE.		
6-G	13 CHANGED SICKBAY ARRG. ADDED SINKS.		
7-G	14 CHANGED FOOTPRINT OF RHIB TO REFLECT INBOARD DRIVE.		
6-G	15 CHANGED QUARTERS ON 01 DK TO ALLOW MIN OF 30 SQ FT/PERSON.		
3-B	16 ADDED TONNAGE OPENINGS.		
	17 ADDED PILOT HOUSE TOP.		
9-G	18 THE ABOVE CHANGES ARE PER CR #7002.		

9-G	1 COMPLETELY REVISED HELO DECK.	CMW	9/20/91	APV	10/3/91
7-D	2 REVISED MEN/WOMEN LOCKER ROOMS, LAB, WORKSHOP, LAUNDRY AND HEADS AFT FR 20 ON MN DK TO RELOCATE DK HOUSE ENTRY DOORS OUTBOARD P/S.				
7-G	3 MOVED 01 DK MID TRANSV BHD FWD.				
9-A	4 CHANGED CONFIGURATION OF STAIRS TO E.R.				
10-E	5 REMOVED DRAIN HOLES FROM STERN RAMP.				
4-B	6 CHANGED FWD END OF HOUSE ON 02 DECK TO SUIT NEW LINES.				
8-D	7 STBD CRANE MOVED OUTBOARD 2 FT.				
	8 THE ABOVE CHANGES ARE PER CR #7003.	NPB	10/3/91		
	9 ADDED RESERVATION #1.				

NO	BENDER DWG NO	PLAN NO	TITLE
REFERENCES			
PLAN APPROVAL			
AGENCY	DATE	REV	DATE
ABS	9/18/91	A	10/3/91
USCG	9/18/91	A	10/3/91
OWNER	9/18/91	A	10/3/91
BENDER			
210' OIL SPILL RESPONSE VESSEL			
GENERAL ARRANGEMENTS			
NO	25390	210SR-001-801-02	G
SHEET 1 OF 1			



REVISIONS					
ZONE	REV	DESCRIPTION	DATE	APPROVED	
A	1	ADDED RAILINGS AROUND PILOT HOUSE TOP.	CMW 9/16/91	APV 9/18/91	H
	2	ADDED STACK ON 02 DK ABOVE THE OIL HEATER ROOM.			
	3	THE ABOVE CHANGES ARE PER CR #7002.			
A	1	REVISED HELO DK AND ADDED DECK LOCKER ON MN DK.	CMW 9/20/91	APV 10/3/91	G
	2	ADDED SIDE CUT-OUTS ON MAIN DECK.	NFB 10/3/91		
	3	ADDED RESERVATION #1.			
A	1	REVISED OUTLINE ON TRANSREC.	CJO 2/10/92	APV 3/9/92	F
	2	REVISED HELO DK AND STACK ON MN DK.			
	3	REVISED BULWARK ON MN DK.			
	4	REVISED OUTLINE, WINDOWS, AND DOOR ON PILOT HOUSE.			
	5	REVISED OPENINGS ON MAIN DECK.			
	6	REVISED THE BOW FENDER.			
	7	REVISED POSITION OF BOATS ON THE 01 DECK AND THE MAIN DECK.			
	8	REVISED THE DOOR ON THE 03 DECK.			
	9	REVISED THE RAILING ON TOP OF PILOT HOUSE.			
	10	CHANGED THE SHEER OF THE 03 AND 04 DECKS.			
	11	ADDED SEATTLE CRANES AT FRAMES 56 AND FRAME 91			
	12	REVISED HANDRAILS			
D	1	ADDED VSAT ANTENNA AND REVISED ANTENNA ARRANGEMENT	RAW 6/7/92	APV 6/8/92	E
	2	REVISED BULWARK GATES & BULWARKS			
	3	LOWERED CRANE PEDESTALS TO 7'-6"			
E	1	RELEASED RESERVATION #1	RAW 9/2/92		D
	2	RELOCATED RADAR SCANERS			
	3	RELOCATED FLOODLIGHTS			
	4	ADDED & RELOCATED AC UNITS			
	5	RELOCATED STBD RHIB			
	6	REVISED SIZE OF CLOSED CHOCKS			
	7	RELOCATED TRANSREC 350			
	8	REDEFINED BOOM BOAT INCORPORATES CR 7067 & 7078			
F	1	BOOM BOAT RAMP EXTENSION ADDED	RW 11/10/92		C
	2	ADDED LIGHT.			
	3	RELOCATED LIGHTS.			
	4	RELOCATED LIGHT AND PORTHOLE.			
	5	ADDED FIRE HOSE RACKS.			
	6	RELOCATED LIGHT ON MAST.			
	7	RELOCATED DECK FITTINGS.			
	8	ADDED HULL NAME.			
	9	ADDED CLEAR VIEW IN WINDOW.			
ALL	1	DRAWING MEETS "AS-BUILT" CONDITION FOR HULLS 1032 & FOLLOWS WITH NO CHANGE.	RAW 3/17/93		B
	2	FOR HULLS 1032 & FOLLOWS WITH NO CHANGE.			

RESERVATIONS

NO	BENDER DWG NO	PLAN NO	TITLE
REFERENCES			
PLAN APPROVAL			
AGENCY	DATE	REV	DATE
ABS	SUBMITTED		
	APPROVED		
USCG	SUBMITTED		
	APPROVED		
OWNER	SUBMITTED	A	C
	APPROVED	9/27/91	4/14/91

BENDER Bender Design & Marine Co., Inc. 1031 1032 1033 1034 C-02194 10/08-21-91 APV/08-22-91		210' OIL SPILL RESPONSE VESSEL OUTBOARD PROFILE 25390 210SR-001-801-01 SHEET 1 OF 1	
-------------------------------------------------------------------------------------------------------------	--	-------------------------------------------------------------------------------------------------	--

THIS DOCUMENT IS THE EXCLUSIVE PROPERTY OF BENDER DESIGN & MARINE CO., INC. AND IS LOANED TO A COMPANY, INDIVIDUAL, OR OTHER PARTY FOR A SPECIFIC PURPOSE. IT IS NOT TO BE REPRODUCED, COPIED, OR IN ANY MANNER DISSEMINATED WITHOUT THE WRITTEN CONSENT OF BENDER DESIGN & MARINE CO., INC. THE USER OF THIS DOCUMENT AGREES TO HOLD BENDER DESIGN & MARINE CO., INC. HARMLESS FROM AND AGAINST ALL CLAIMS, DAMAGES, LOSSES, AND EXPENSES, INCLUDING REASONABLE ATTORNEY'S FEES, THAT MAY BE ASSERTED AGAINST OR INCURRED BY BENDER DESIGN & MARINE CO., INC. DUE TO THE USER'S NEGLIGENCE OR WILLFUL MISUSE OF THIS DOCUMENT.